



COMPARATIVE STUDY OF GLUCOSE TRANSPORTERS GLUT-2 AND GLUT-5 IN OSTRICHES GASTROINTESTINAL TRACT

Piret Hussar¹, Martin Kärner², Tõnu Järveots³, Lazo Pendovski⁴,
Ilmars Duritis⁵, Florina Popovska-Percinic⁴

¹Faculty of Medicine, University of Tartu, Estonia

²Faculty of Science and Technology, University of Tartu, Estonia

³Institute of Veterinary Medicine and Animal Sciences,
Estonian University of Life Sciences

⁴Faculty of Veterinary Medicine, Ss. Cyril and Methodius University in Skopje,
Skopje, R. Macedonia

⁵Faculty of Veterinary Medicine, Latvian University of Agriculture, Latvia

Received 22 January 2016; Received in revised form 25 April 2016; Accepted 30 June 2016

ABSTRACT

The knowledge about transport of sugars in animals and birds gastrointestinal tract is very important for science as carbohydrates are the main energy source of food. Since until now there is few information about the localization of glucose transporters - integral membrane proteins that mediate the transport of glucose and related substances across the cellular membranes - in birds gastrointestinal tract, the aim of the present study was to localize glucose transporters-2 and -5 (GLUT-2 and -5) in three parts of the ostriches gastrointestinal tract – proventriculus, duodenum and ileum - comparatively in ostrich chicken in their early ontogenesis period. Material from the superficial gland zone of the proventriculus, duodenum and terminal zone of the ileum were collected from eight female ostriches (*Struthio camelus* var. *Domesticus*): two chickens after hatching, three 7 and three 30-days old ostriches. The material was fixed with 10% formalin, embedded into paraffin, slices 7 µm thick were cut followed by immunohistochemical staining with polyclonal primary antibodies Rabbit anti-GLUT-2 and Rabbit anti-GLUT-5, carried out according to the manufacturers guidelines (IHC kit, Abcam, UK). The results showed that the staining for both antibodies was weaker in all parts of the gastrointestinal tract of ostriches after hatching compared to 7 and 30 days old ostriches showing that the gastrointestinal tract of ostriches immediately after hatching is not entirely capable of transportation of carbohydrates. The results of our study may indicate the possibility of a close relationship between feeding and the ability to transport sugars in the gastrointestinal tract.

Key words: ostriches, gastrointestinal tract, GLUT-2, GLUT-5

INTRODUCTION

Ostriches *Struthio camelus* var. *Domesticus*, the only member of the Struthionidae, are the largest flightless birds from the Ratitae family deriving from the Middle Eocene (56 to 33.9

million years ago). As ostriches have a very good ability for acclimatization, they can be farmed all over the world. Currently, ostrich farming due to the rapidly increasing demand for low-cholesterol meat products, leather and eyes used in corneal research and human corneal transplants is undergoing a period of rapid development with the need for scientific data to facilitate understanding of the problematic issues of rearing ostrich chicken and enhancing commercial efficiency of ostrich production (1, 2). As there are notes in literature (3) about the high mortality of ostrich chicken in farms especially until 28 days after hatching (mortality rate of about 46 %), but there is relatively few data about scientific research on organ systems, including the gastrointestinal system at early periods of ontogenesis of ostrich chicken, more detailed

Corresponding author: Prof. Piret Hussar, PhD

E-mail address: piretut@gmail.com

Present address: Department of Anatomy, Histology and Embryology
Institute of Medicine and Translational Medicine, Faculty of Medicine
University of Tartu, Ravila 19, Tartu 50411, Estonia
Phone: +372 56245143

Copyright: © 2016 Hussar P. This is an open-access article published under the terms of the Creative Commons Attribution License which permits unrestricted use, distribution, and reproduction in any medium, provided the original author and source are credited.

Competing Interests: The authors have declared that no competing interests exist.

Available Online First: 25 July 2016

Published on: 15 October 2016

<http://dx.doi.org/10.1515/macvetrev-2016-0089>

scientific research is necessary to be carried out in this field.

In the African ostrich (*Struthio camelus* var. *Domesticus*) the stomach is composed of two anatomically and functionally different parts – proventriculus (*pars glandularis*), where gastric juice secretion takes place and gizzard s. ventriculus (*pars muscularis*) which is used primarily to grind and break-up food (4). In the small intestine carbohydrates are degraded into monosaccharides, which are the major source of fuel for the metabolism (5).

Although the histological and histochemical features of the gastrointestinal tract of fowl has been studied in great detail already in the last century, while the anatomical and histological structure of the African ostrich stomach has been recently studied and described rather intensively (6-10), there are comparatively few studies on the glucose transporters in the gastrointestinal tract of this bird species (11). The aim of the present study was to detect the localization of glucose transporters -2 and -5 (GLUT-2 and GLUT-5) in different parts of ostriches gastrointestinal tract, comparatively in ostriches chicken immediately after hatching in 7 days old and in 30 days old ostriches.

MATERIAL AND METHODS

Material from three parts of the gastrointestinal tract – the superficial gland zone of the proventriculus, duodenum and the terminal zone of the ileum - was collected from 8 female ostriches, raised in the African ostrich farm in Latvia, divided into 3 groups: two ostriches immediately after hatching, three 7 days old ostriches and three 30 days old ostriches. 7 and 30 days old ostrich chicken were housed in a hatching chamber for the first 3 days after hatching, thereafter kept in a box with heated floor. The commercial ostrich chicken's feed – Strus Premium-Strus 1 and water were available ad libitum. To minimize pain before euthanasia, anaesthesia by 0.5 ml of 10% ketamine and 0.5 ml of 2% xylazine solution intramuscularly was carried out followed by 0.5 ml of 20% pentobarbital intracardiac injection.

Specimens, 0.5-1.0 cm in diameter, were fixed in 10% neutral buffered formalin solution (48h at room temperature), dehydrated in a tissue processor (TISSUE-TEK II) and embedded into paraffin according to the standardized tissue histological procedure (12). Sections 7 µm in thickness were cut (microtome Microm HM360). Slices floated on Poly-L-Lysine coated slides (O. Kindler GmbH, Freiburg, Germany) were deparaffinized with xylene

and rehydrated in a graded series of ethanol. The sections were stained using Immunohistochemistry kit (Abcam, UK) according to the manufacture's guidelines. The sections were pre-treated using heat mediated antigen retrieval with sodium citrate buffer (pH 6) for 20 min and incubated with primary rabbit polyclonal antibodies to glucose transporter 2 (GLUT-2) and - 5 (GLUT-5) primary antibodies (Abcam, UK) in 1/1000 dilution, for 30 min at 37° C. Biotinylated secondary antibody and streptavidin-conjugated peroxidase were used for detection using DAB as chromogen. Nuclei were counterstained with Harris Hematoxylin. Negative controls contained antibody diluent (Dako, S0809) instead of primary antibodies. Rat liver tissue sections for identifying GLUT-2 and human kidney tissue sections for GLUT-5 were used as positive controls available for comparison on Abcam antibody producer's homepage (<http://www.abcam.com>) as examples for the antibodies immunohistochemistry on paraffin-embedded tissues (IHC-P).

Photos of the slides were taken by the microscope Zeiss Axioplan-2 Imaging (Germany) and saved to the computer for analyzing by visual control using camera (AxioCam HRc, Germany) connected to the microscope.

The experiments were carried out in accordance with the Guidelines laid down by the European Communities Council Directive of 24 November 1986 (86/609/EEC) and the Ethical Committee of Latvian University of Agriculture has approved the experiments (protocol number 2014/2).

RESULTS

The investigation provided information about the localization of GLUT-2 and GLUT-5 in gastrointestinal tract in ostrich chicken in different ages in their early ontogenesis (Table 1).

In ostrich chicken after hatching, the staining for glucose transporters GLUT-2 and GLUT-5 occurred to be very weak in all investigated regions of the gastrointestinal system, positively were stained only the cytoplasm of some epithelial cells of proventriculus and the cytoplasm of the enterocytes (absorptive cells) in the apical parts of intestinal villi. The brush border membranes of the villi were stained weakly and the goblet cells in the epithelium of the small intestine were mostly unstained (Fig. 1).

In 7 days old ostriches, similarly to the chicken after hatching, the staining for both antibodies occurred to be weak in the epithelial cells of proventriculus and moderate in duodenum, however comparatively the staining was stronger for

GLUT-5 in duodenal epithelial cells. Moderate staining for both antibodies was noted in the goblet cells of the terminal zone of ileum (Fig. 2).

In 30 days old ostriches epithelial cells of proventriculus, the brush border of enterocytes

as well as the goblet cells in the small intestine were stained strongly positively for GLUT-2 and GLUT-5. In the ileum, the staining was more intensive for GLUT-2 (Fig. 3).

Table 1. The expression of GLUT-2 and GLUT-5 in the gastrointestinal tract of ostriches in different ages

Antibody	Proventriculus			Duodenum			Ileum		
	After hatching	7 days	30 days	After hatching	7 days	30 days	After hatching	7 days	30 days
GLUT-2	weak	weak	strong	weak	weak	strong	weak	moderate	strong
GLUT-5	weak	weak	strong	weak	weak/moderate	strong	weak	moderate	moderate/strong

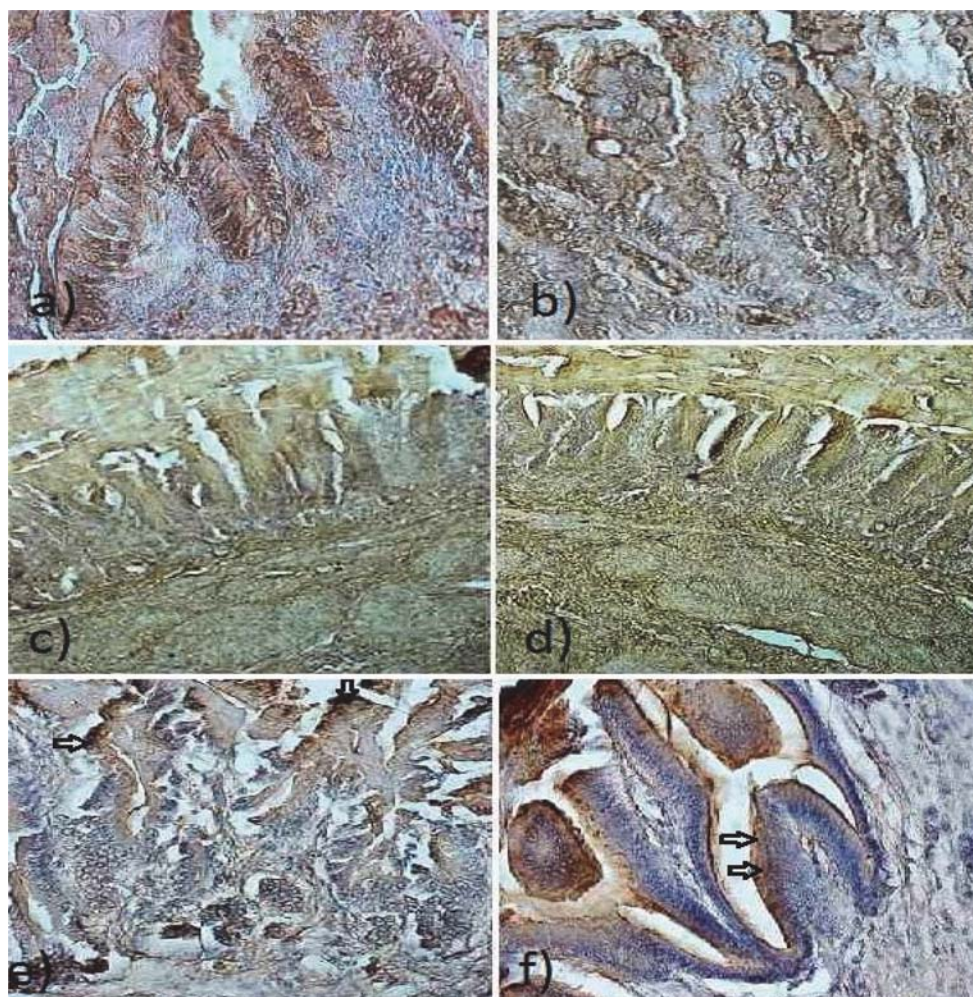


Figure 1. Glandular stomach: **a)** Epithelial cells weakly stained for GLUT-2 in proventriculus of ostriches after hatching. 400x; **b)** Epithelial cells weakly stained for GLUT-5 in proventriculus of ostriches after hatching. 400x; **c)** Weak staining for GLUT-2 in 7 days old ostriches proventriculus. 200x; **d)** Staining for GLUT-5 in 7 days old ostriches proventriculus. 200x; **e)** Strong staining for GLUT-2 in 30 days old ostriches proventricular epithelial cells (arrows). 200x. **f)** Strong staining for GLUT-5 in 30 days old ostriches proventricular epithelial cells (arrows). 200x.

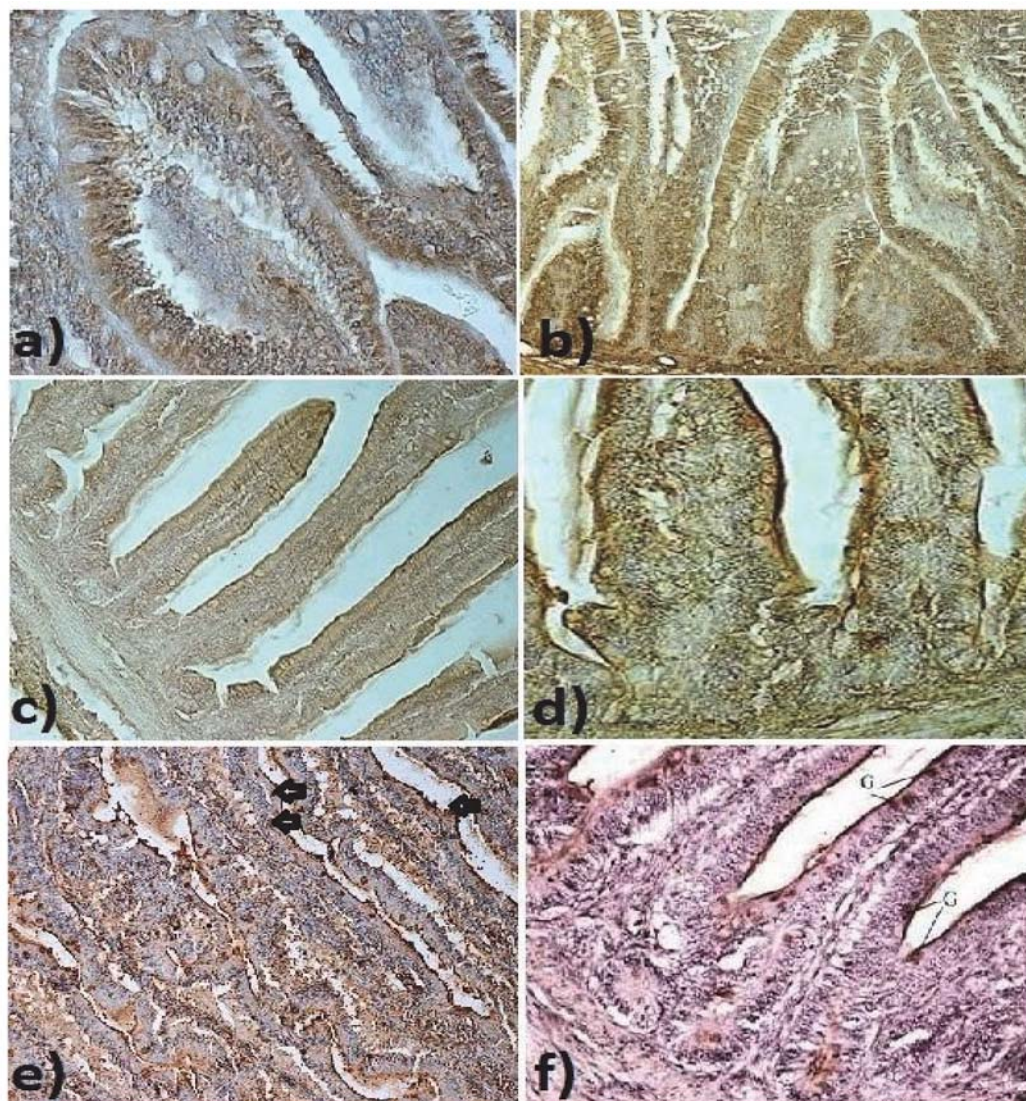


Figure 2. Duodenum: **a)** Weak staining for GLUT-2 in epithelium of duodenal mucosa of ostriches after hatching. Note the unstained goblet cells in the epithelium. 200x; **b)** Weak staining for GLUT-5 in epithelium of duodenal mucosa of ostriches after hatching. Goblet cells in the epithelium remain unstained. 200x; **c)** Weak staining for GLUT-2 in epithelial cells of the duodenal villi of ostriches after hatching. 200x; **d)** Moderate staining for GLUT-5 in epithelial cells of the duodenal villi of ostriches after hatching. 200x; **e)** Brush border membranes and goblet cells (arrows) strongly stained for GLUT-2 in epithelium of duodenal mucosa of 30 day old ostriches. 200x.; **f)** Brush border membranes and goblet cells (G) strongly stained for GLUT-5 in epithelium of duodenal mucosa of 30 day old ostriches. 200x.

DISCUSSION

According to the farmers observations there is a well-established opinion that it is advisable to start the feeding of ostrich chickens not earlier than on the third or fourth day after hatching, because starting feeding earlier increases mortality of ostrich chickens (13). However this opinion lacks scientifically proven arguments. The researcher's opinions on the appropriate starting time of feeding differ (14). As the optimal time of the first feeding of ostrich chickens mainly depends on how well

developed and functioning is the digestive tract at the moment of hatching. More studies of the gastrointestinal tract are needed at the early stages of ontogenesis.

As glucose transporters play a pivotal role in the transfer of glucose across epithelial cell layers that separate distinct compartments in the organism (15,16), in our experiments on ostrich chickens the localization of GLUT-2 and -5 was observed in three different parts of the gastrointestinal tract. GLUT-5 is the facilitated fructose transporter which allows for fructose to be transported from the intestinal

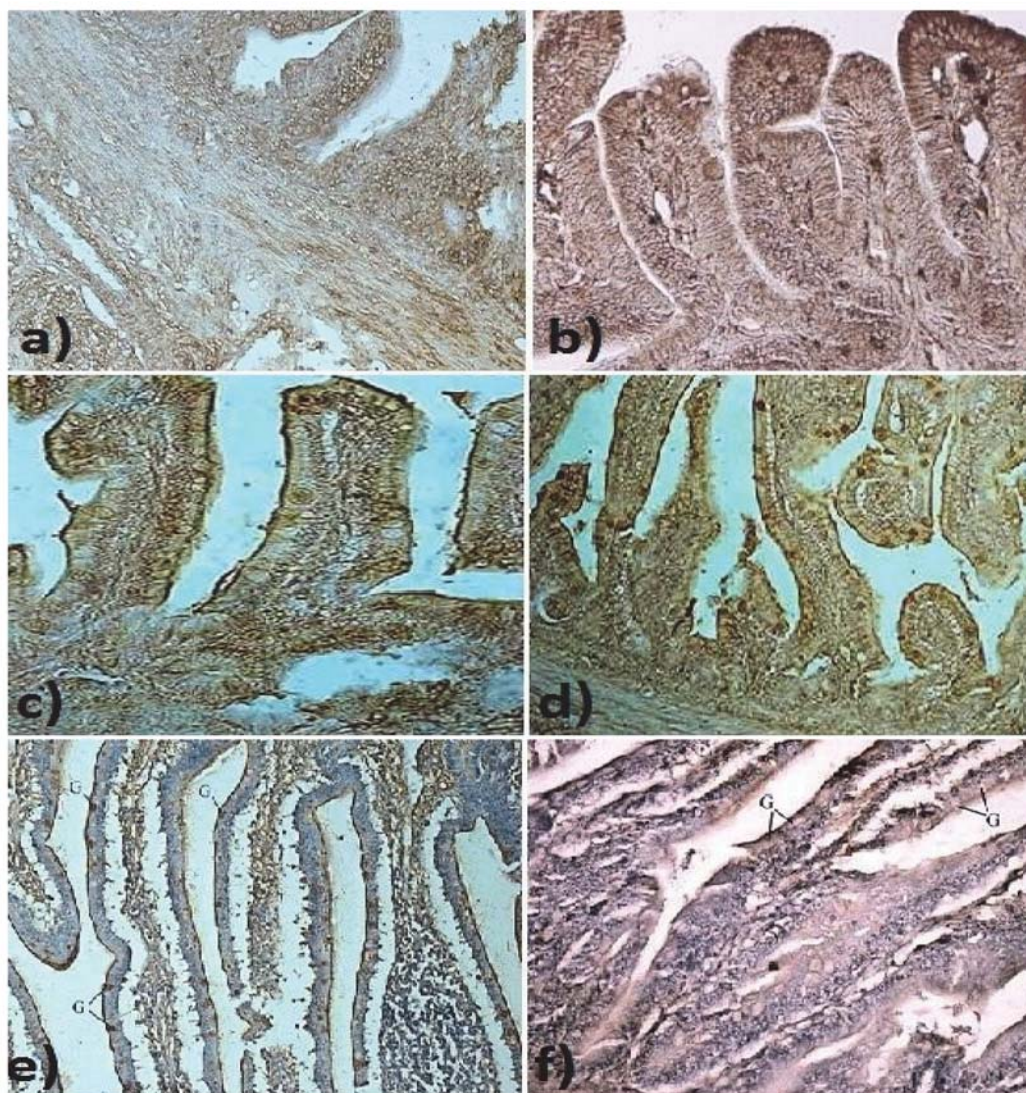


Figure 3. Terminal zone of ileum: **a)** Weak staining for GLUT-2 in ileal epithelium in ostriches after hatching. 400x; **b)** Weak staining for GLUT-5 in ileal epithelium in ostriches after hatching. 400x; **c)** Brush border membranes and goblet cells moderately stained for GLUT-2 in duodenal epithelium in 7 days old ostriches. 200x; **d)** Brush border membranes and goblet cells strongly stained for GLUT-5 in duodenal epithelium in 7 days old ostriches. 200x; **e)** Strong positive staining for GLUT-2 in goblet cells (G) in the terminal zone of ileum of 30 day old ostriches. 100x.; **f)** Positive staining for GLUT-5 in goblet cells (G) in the terminal zone of ileum of 30 day old ostriches. 100x.

lumen into the enterocyte by facilitated diffusion due to fructose's high concentration in the intestinal lumen and is shown to be located in the mammals' intestinal epithelium (17). After apical transport mediated by GLUT-5, fructose is transported across the basolateral membrane by GLUT-2. GLUT-2, a transmembrane carrier protein that enables passive movement of hexoses across cell membranes, was used since the hexoses' transport in birds occurs predominately by passive transport (18, 19). Recent works (20) propose that GLUT-2 is also involved in the apical transport of hexoses (glucose, galactose and fructose).

We showed that in all investigated regions of ostrich chickens shortly after hatching, compared to 7- and 30 days old chicken, the staining for both glucose transporters was weak - the brush border membranes of the intestinal villi and the goblet cells in the epithelium of small intestine were mostly unstained. In 7 days old ostriches, the glandular stomach and duodenum stained weak, however the epithelial cells of the terminal zone of the ileum were stained intensively for GLUT-5 (fructose transport).

In 30 days old ostriches, the epithelial cells of glandular stomach as well as brush border

membranes and goblet cells in the duodenal and ileal epithelium were stained intensively positively for GLUT-2 and GLUT-5. The staining for GLUT-2 occurred to be stronger in the terminal part of the ileum, indicating a stronger transport of hexoses in this region. These experimental results may indicate that the gastrointestinal tract of ostriches immediately after hatching is not yet entirely capable of transportation of carbohydrates, hence the ostrich chickens mostly begin to eat only at the end of the first week after hatching.

CONCLUSION

The investigation provided comparative information about the localization of GLUT-2 and GLUT-5 in gastrointestinal tract in ostrich chickens at different ages in their early ontogenesis.

In our study in ostrich chickens immediately after hatching, the staining for glucose transporters GLUT-2 and GLUT-5 occurred to be very weak. In 7 days ostriches, the staining for the glucose transporters was stronger especially in the epithelium of the terminal zone of the ileum. In 30 days old ostriches epithelial cells of proventriculus, the brush border of enterocytes as well as the goblet cells in the small intestine were all stained strongly positively for GLUT-2 and GLUT-5.

The results of our study may indicate the possibility of close relationship between feeding and ability to transport sugars in the gastrointestinal tract. The knowledge about the transepithelial transport of sugars in the gastrointestinal tract of ostrich chickens in their early ontogenesis gives valuable information about their feeding requirements.

ACKNOWLEDGEMENTS

We thank Mrs. Mare Tamm for her kind laboratory assistance.

REFERENCES

1. Davis, K. (1993). Nowhere to hide. Poultry Press 3 (4).
2. Duritis, I. (2011). Morphofunctional characterization of the stomach and small intestine of the ostrich (*Struthio camelus* var. *domesticus*) from day 38 of embryonic development to the age of 60 days. Doctoral dissertation (in Latvian), Latvia University of Agriculture, Jelgava, Latvia.
3. Cloete, S.W.P., Lambrechts, H., Punt, K., Brand, Z. (2001). Factors related to high levels of ostrich chick mortality from hatching to 90 days of age in an intensive rearing system. *Journal of the South African Veterinary Association* 72(4): 197–202.
<http://dx.doi.org/10.4102/jsava.v72i4.652>
PMid:12219914
4. Fritz, J., Hummel, J., Kienzle, E. et al. (2011). Gizzard vs. teeth, it's a tie: food-processing efficiency in herbivorous birds and mammals and implications for dinosaur feeding strategies. *Paleobiology* 37, 577-586.
<http://dx.doi.org/10.1666/10031.1>
5. Bezuidenhout, A.J., Van Aswegen, G. (2011). A light microscopic and immunohistochemical study of the gastrointestinal tract of the ostrich (*Struthio Camelus* L.). *Onderstepoort J. Vet. Res.* 57, 37-48.
6. Cho, P., Brown, R., Anderson, M. (1984). Comparative gross anatomy of ratites. *Zoo Biology* 3, 133-144.
<http://dx.doi.org/10.1002/zoo.1430030205>
7. Cooper, R.G., Mahroze, K.M. (2004). Anatomy and physiology of the gastro-intestinal tract and growth curves of the ostrich (*Struthio camelus*). *Animal Science Journal* 75, 491-498.
<http://dx.doi.org/10.1111/j.1740-0929.2004.00218.x>
8. Illanes, J., Fertilio, B., Chamblas, M. et al. (2006). Histologic description of the different segments from the ostrich digestive system (*Struthio camelus* var. *domesticus*). *Int J Morphol.* 24 (2): 205-214.
<http://dx.doi.org/10.4067/S0717-95022006000300015>
9. Wang, J.X., Peng, K.M., Du, A.N. et al. (2007). Histological study on the digestive ducts of African ostrich chicks. *Chin J Zool.* 42 (3): 131-135.
10. Duritis, I., Mugurevics, A., Mancevica, L. (2013). The distribution of gastrin, somatostatin and glucagon immunoreactive (IR) cells in ostrich stomach during the pre- and post-hatching period. *Anatomia Histologia Embryologia* 42 (5): 362–368.
<http://dx.doi.org/10.1111/ahc.12023>
PMid:23293918
11. Hussar, P., Järveots, T., Rotmistrova, A. et al. (2014). Immunohistochemical localization of glucose transporters in ostriches gastrointestinal tract. *Wulfenia* 21(12): 174-180.
12. Carson, F.L. (1997). *Histotechnology*. Chicago, IL: ASCP Press.
13. Noy, Y., Sklan, D. (1995). Digestion and absorption in the young chick. *Poultry Science* 74, 366-373.
<http://dx.doi.org/10.3382/ps.0740366>
PMid:7724461
14. Kocan, A.A., Crawford, J.A. (1999). *An ostrich farmers handbook*. New York: CAB International. PMCid:PMC96283

15. Takata, K. (1996). Glucose transporters in the transepithelial transport of glucose. *J. Electron Microsc.* 45 (4): 275-284.
<http://dx.doi.org/10.1093/oxfordjournals.jmicro.a023443>
16. Uldry, M., Ibberson, M., Hosokawa, M., Thorens, B. (2002). GLUT2 is a high affinity glucosamine transporter. *FEBS Lett.* 524 (1-3): 199–203.
[http://dx.doi.org/10.1016/S0014-5793\(02\)03058-2](http://dx.doi.org/10.1016/S0014-5793(02)03058-2)
17. Ferraris, R.P. (2001). Dietary and developmental regulation of intestinal sugar transport. *Biochem. J.* 360, 265-276.
<http://dx.doi.org/10.1042/bj3600265>
PMid:11716754 PMCID:PMC1222226
18. Uldry, M., Thorens, B. (2004). The SLC2 family of facilitated hexose and polyol transporters. *Pflügers Arch.* 447, 480–489.
<http://dx.doi.org/10.1007/s00424-003-1085-0>
PMid:12750891
19. Barone, S., Fussell, S.L., Singh, A.K. et al. (2009). Slc2a5 (Glut5) is essential for the absorption of fructose in the intestine and generation of fructose-induced hypertension. *J Biol Chem.* 284 (8): 5056–5066.
<http://dx.doi.org/10.1074/jbc.M808128200>
PMid:19091748 PMCID:PMC2643499
20. Kellett, G.L., Brot-Laroche, E. (2005). Apical GLUT2: a major pathway of intestinal sugar absorption. *Diabetes* 54 (10): 3056-3062.
<http://dx.doi.org/10.2337/diabetes.54.10.3056>
PMid:16186415